

Email Set-Up

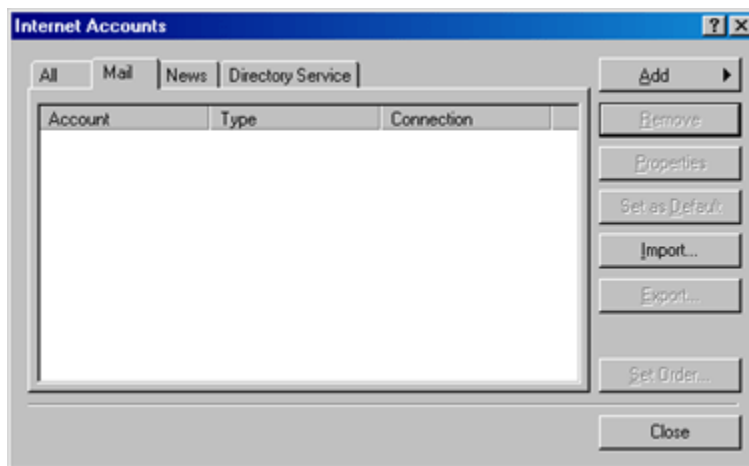
Summary

This article describes how to set-up Outlook Express so that you can use it to send and receive e-mail to/from your Hyperlinx domain.

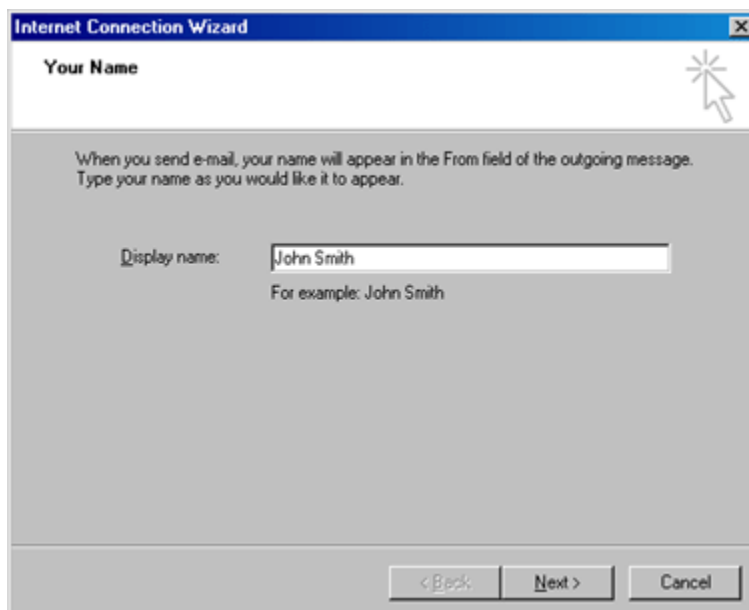
Procedure

To configure Outlook Express for sending and receiving e-mail:

1. Open Outlook Express.
2. Select the Accounts option from the Tools menu. The Internet Accounts dialog box appears:

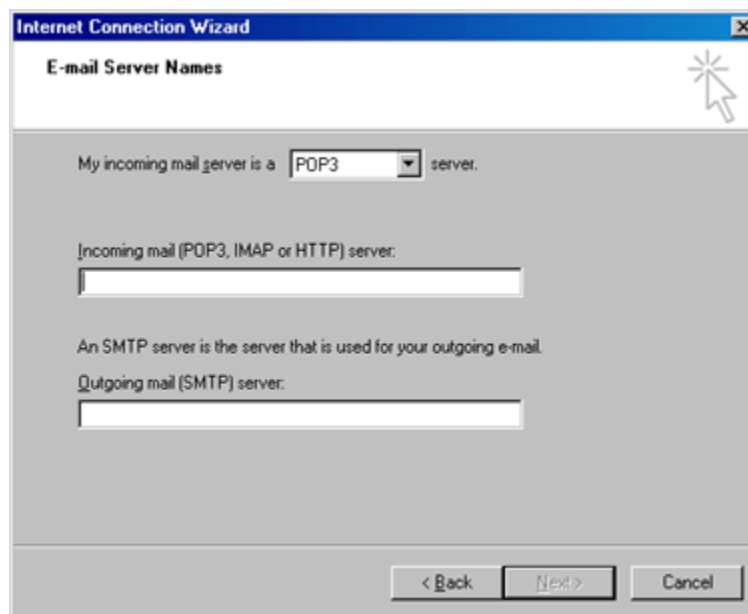


3. Click on the Add button to add a new account.
4. Click on the Mail... option from the menu that appears. The Internet Connection Wizard appears:



5. Enter the name you want to appear in the From field of outgoing e-mail messages, and click on the Next button.

6. Enter the e-mail address that people must use when sending e-mail to you, and click on the Next button. The E-mail Server Name dialog box appears:



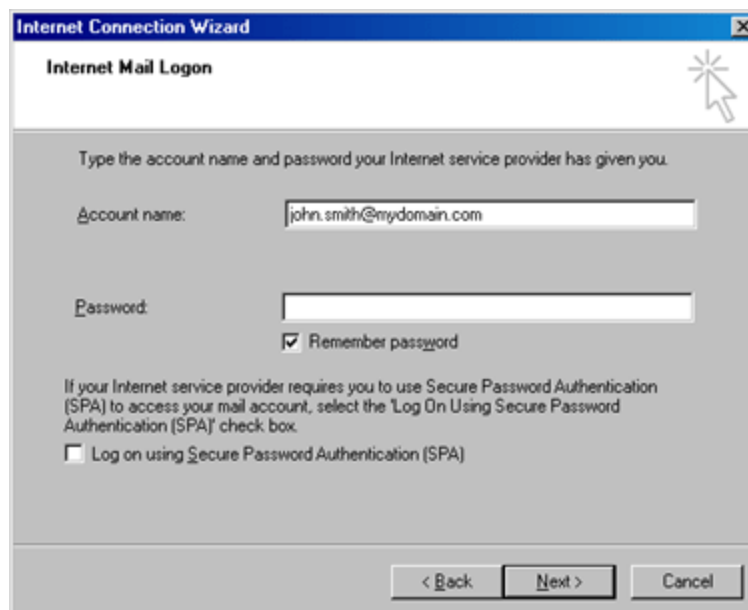
The screenshot shows the 'E-mail Server Names' dialog box from the Internet Connection Wizard. The title bar reads 'Internet Connection Wizard' and the window title is 'E-mail Server Names'. The main content area contains the following text and controls:

- 'My incoming mail server is a **POP3** server.' (The 'POP3' is in a dropdown menu).
- 'Incoming mail (POP3, IMAP or HTTP) server:' followed by an empty text input field.
- 'An SMTP server is the server that is used for your outgoing e-mail.'
- 'Outgoing mail (SMTP) server:' followed by an empty text input field.

At the bottom of the dialog box are three buttons: '< Back', 'Next >', and 'Cancel'.

7. In the Incoming mail box enter "yourdomain.co.uk" (e.g. johnsmith.co.uk).

8. In the Outgoing mail box enter the name of the SMTP server which is also "yourdomain.co.uk" (e.g. johnsmith.co.uk). Click on the Next button. The Password dialog box appears:



The screenshot shows the 'Internet Mail Logon' dialog box from the Internet Connection Wizard. The title bar reads 'Internet Connection Wizard' and the window title is 'Internet Mail Logon'. The main content area contains the following text and controls:

- 'Type the account name and password your Internet service provider has given you.'
- 'Account name:' followed by a text input field containing 'john.smith@mydomain.com'.
- 'Password:' followed by a text input field.
- A checked checkbox labeled 'Remember password'.
- Text: 'If your Internet service provider requires you to use Secure Password Authentication (SPA) to access your mail account, select the "Log On Using Secure Password Authentication (SPA)" check box.'
- An unchecked checkbox labeled 'Log on using Secure Password Authentication (SPA)'.

At the bottom of the dialog box are three buttons: '< Back', 'Next >', and 'Cancel'.

9. Enter, in the Account Name box, the e-mail address from which you are going to retrieve mail in the form mail@yourdomain.co.uk (e.g. info@johnsmith.co.uk).

10. Enter the password *exactly* as sent to you by Hyperlinx (case sensitive), and click on the Next button and click on the Finish button to complete the configuration of Outlook Express.

11. You should now be able to use Outlook Express XP to receive your e-mail from your new address! Send a test email to and from your new address to another email account on your PC or alternatively email Hyperlinx using this new account and we will confirm the mail is received successfully.